

Dover Bay Available Properties

PRICES GOOD THROUGH 3/1/12!



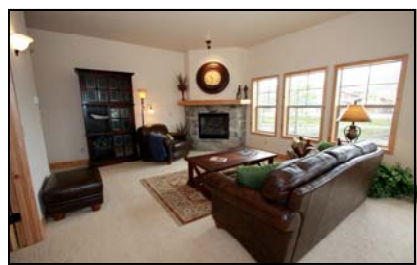
Executive Waterfront Home Sites

WEST DOVER BAY! We've saved the best for last! Only primary waterfront home sites available at Dover Bay! This exclusive and secluded unique estate-size home sites have premium southern exposure and breathtaking views. These waterfront home sites are approved for private docks, and only minutes away from the Marina. The *West Dover Bay* home sites start at \$459,000.



Marina Town Neighborhood

NEW! TRENDY HOME DESIGN IN THE MARINA TOWN NEIGHBORHOOD! Enjoy waterfront living in these one-story townhouse style homes in the luxurious Marina Town Neighborhood at the heart of the Dover Bay Waterfront Community. These 1500 square foot, 3-bedroom, 2-bath homes feature southern exposures with an open picturesque waterfront floor plan, top of the line finishes, gas fireplace, outdoor patio with gas barbeque stub, private courtyard and 2 car garage. Pre-Construction prices start at \$549,000.



Bayside South Neighborhood

CLASSIC BAYSIDE! Only 1 left! Last of their kind! Kayak from your home through the meandering inlets leading to beautiful Lake Pend Oreille. An outstanding and affordable opportunity to be part of the Dover Bay Waterfront Community! These light, bright, 2 Bedroom + den, 2 bath condominiums are offered at \$339,000!



Reedwalk Waterfront Neighborhood

Reedwalk waterfront home sites feature views of nature and have enough room for a garden. Complete with southern exposures on Brown's Inlet Bay, there are only a handful left of these unique level home sites. Prices starting at \$265,000.



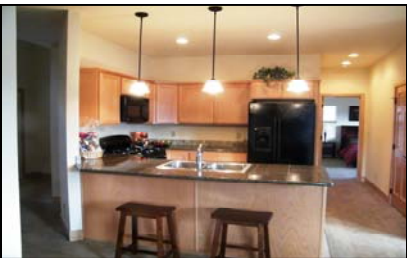
Bayside South & Bayside North Home Sites

The ***Bayside South*** home sites border gorgeous Walson Wetland Park and are surrounded by everything nature has to offer. Canoe or kayak from your back door through the wandering inlets toward beautiful Lake Pend Oreille. Prices starting at \$195,000. Build your dream home in the midst of mature pine trees and enjoy the natural landscape and majestic views in the ***Bayside North*** neighborhood. Prices starting at \$99,900.



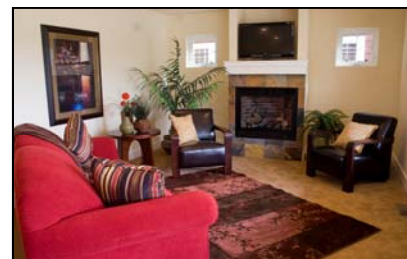
Cabin in the Woods

With a variety of floor plans to choose from, these 2, 3 and 4 bedroom homes are built in a rustic northwest style. Amenities include cedar siding, stone accents, hardwood floors, granite countertops, interior and exterior fireplaces and more. These enchanting cabins start at \$399,500.



Homes in Dover Meadows

Live along the beautiful parkway to Dover Bay. Choose from 14 different style of homes in the ***Dover Meadows*** neighborhood. These bungalow style homes ranging from 1100 to 2400 square feet are just a few steps from the parks, walking and biking trails, sandy beaches and the Marina Village. Prices starting \$269,900. **Never before released—Home sites start at \$79,900!**



Parkside Bungalows

The serene park side setting of these efficient one and two bedroom bungalows make them the perfect family vacation retreat. We've taken the "family lake cabin" idea to a new level, adding modern kitchens, cozy fireplaces, large entertainment decks and an array of modern conveniences. Prices starting at \$179,000.



***For more information please call 208-265-1597 or
click to contact us [www.http://www.doverbayidaho.com/contact-doverbay.html](http://www.doverbayidaho.com/contact-doverbay.html)***